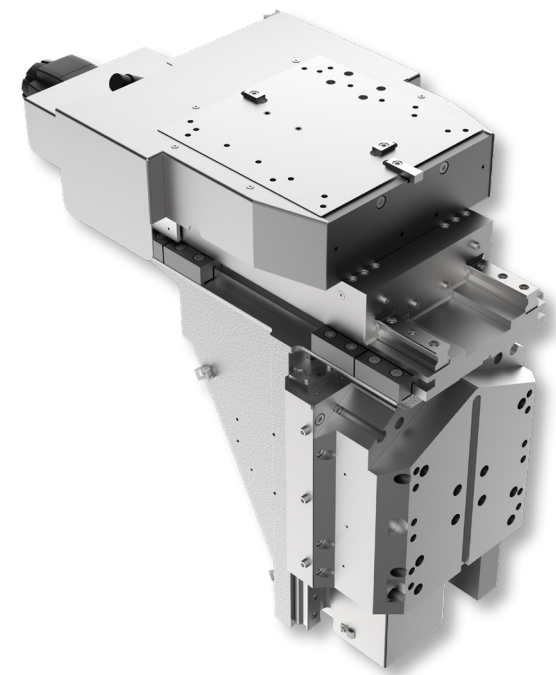


imo-smart

The **imo-smart** is designed to be a highly flexible and versatile solution. The excellent accessibility allows adjustments to be made in record time.

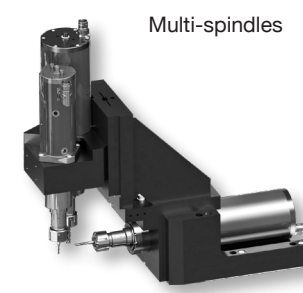


TECHNICAL DATA			
Number of stations:	up to 24 stations (12 stations with E-80-CNC)	Number of spindles:	up to 46 spindles
Indexing accuracy:		Indexing time:	
- with Hirth coupling	±2" (±3 µm with Ø of 800 mm)	- with Hirth coupling	~ 1,5 seconds
- table with drive	±1 µm repeatability	- table with drive	~ 2,5 seconds
Loading/Unloading:	automatic	Installation dimensions:	4'600 mm x 7'500 mm, height 3'000 mm
Platform dimensions:	Ø 3'400 mm	Required floor loading:	min. 1'500 kg/m²

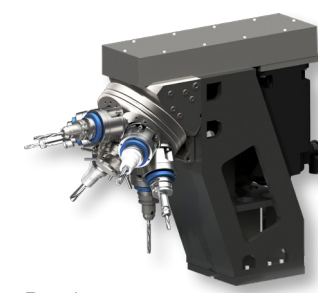


The 3-axis **E-80-CNC** unit meets the most common needs: drilling, milling, reaming and tapping. It can be equipped with two spindles and installed horizontally or vertically. This unit can also be used on the **imo-compact** and the **imo-space**.

TECHNICAL DATA	
Useful rail travel X / Y / Z:	100 mm / 130 mm / 120 mm
Power:	up to 7,5 kW
Repeatability:	1,5 µm and 0.5 µm with glass ruler (optional)
Absolute accuracy X / Y / Z:	±2 µm / ±2 µm / ±2 µm
Available spindles:	- HF up to 60'000 rpm - Multi-spindles - Revolver - Tool changer



Multi-spindles



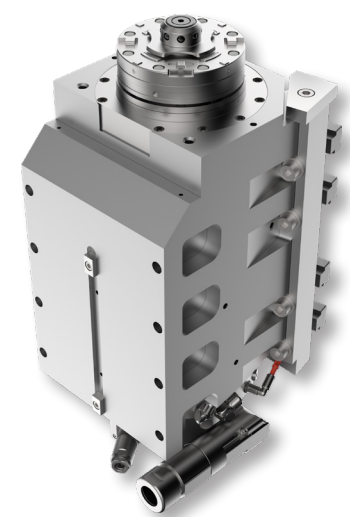
Revolver



Tool changer

The **imo-rot** corresponds to the 4th axis: the C-axis. This option allows you to turn your parts directly on the **imo-smart** to achieve the performance of a vertical spindle lathe.

TECHNICAL DATA	
Rated capacity:	up to 15 kW
Rotation speed:	up to 8'000 rpm
Torque:	up to 60 Nm
Repeatability:	±1 µm on a Ø of 50 mm
Absolute accuracy:	±2 µm on a Ø of 50 mm



The **imo-sat** corresponds to the 4th axis: the C-axis. This option allows you to index your parts precisely.

TECHNICAL DATA	
Axis acceleration:	150 U/s²
Holding torque:	up to 120 Nm (optional)
Repeatability:	±1 µm on a Ø of 50 mm
Absolute accuracy:	±2 µm on a Ø of 50 mm

